

Step by step COLLABORATIVE MODE

How to work in collaborative mode in NEXT-BIM Explorer ?

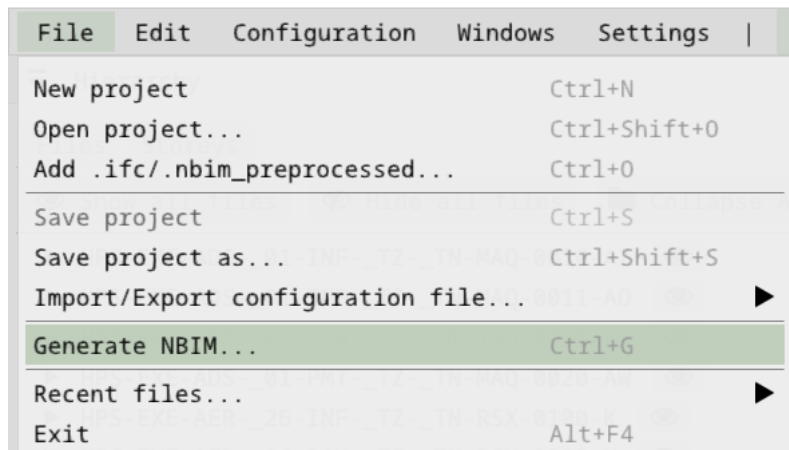


Table of contents

- 1) Generate the nbim file from NEXT-BIM Configurator..... 3
- 2) Import your nbim file into the HoloLen via USB or via Windows Device portal 3
 - 1. **Import your .nbim file via your USB C device**..... 3
 - 2. **Import your .nbim file via the Windows Device Portal**..... 4
- 3) Have a router..... 12
- 4) Turn on the router or the mobile hotspot on your phone..... 12
- 5) Connect the HoloLens on the local network (phone or router). All HoloLens must be connected to the same local network. 12
- 6) Launch a first session of NEXT-BIM Explorer on a HoloLens (opening a nbim file) 13
- 7) Launch NEXT-BIM Explorer in the second HoloLens and click on "Join a session" in the first menu. 14
- 8) The second HoloLens will take a few moments to synchronize with the first session. 15

1) Generate the nbim file from NEXT-BIM Configurator.

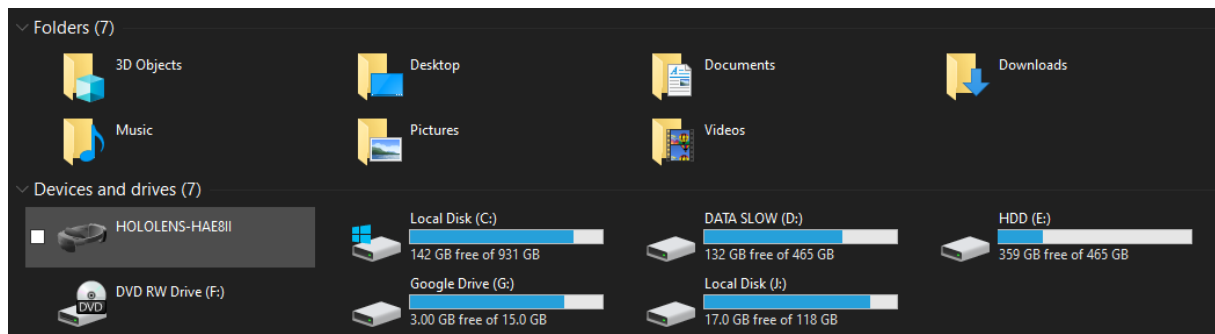
Next-BIM Configurator 2022.2.2



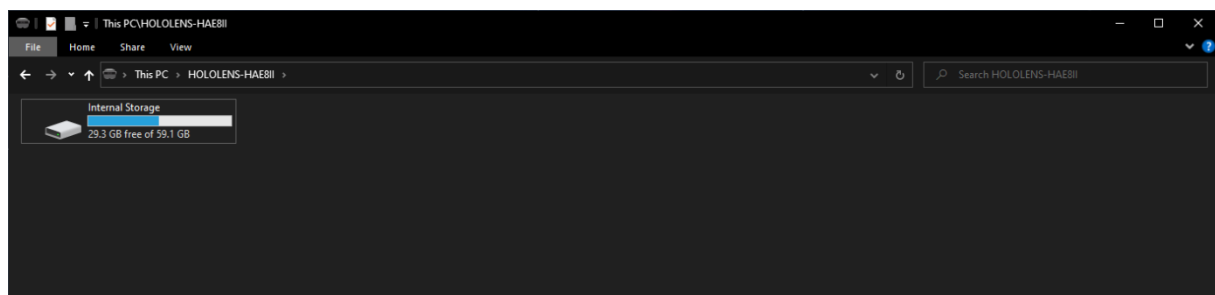
2) Import your nbim file into the HoloLens via USB or via Windows Device portal

1. Import your .nbim file via your USB C device

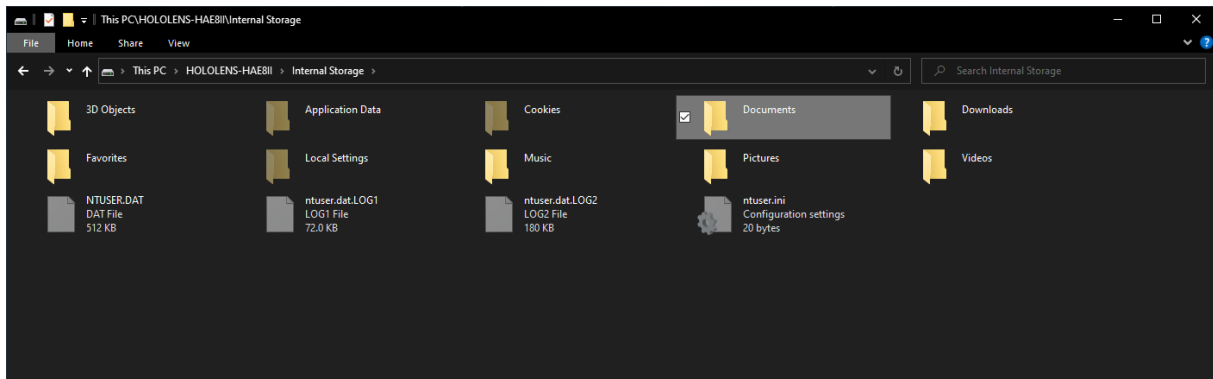
- Connect your HoloLens via USB to your computer.
- Open your file directory on your computer. Click on the HOLOLENS device



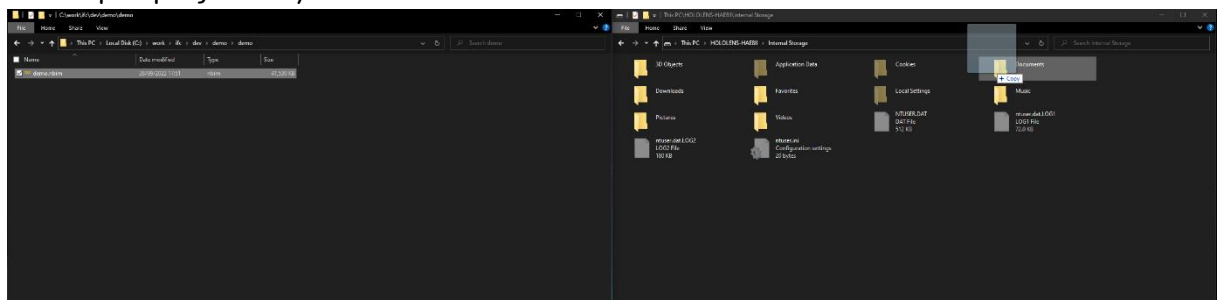
- Go to « Internal Storage »



- Open the « Document » folder



- Copy your .nbim file to the "Documents" folder. We advise you to create one folder per project in your "Documents" folder.



2. Import your .nbim file via the Windows Device Portal

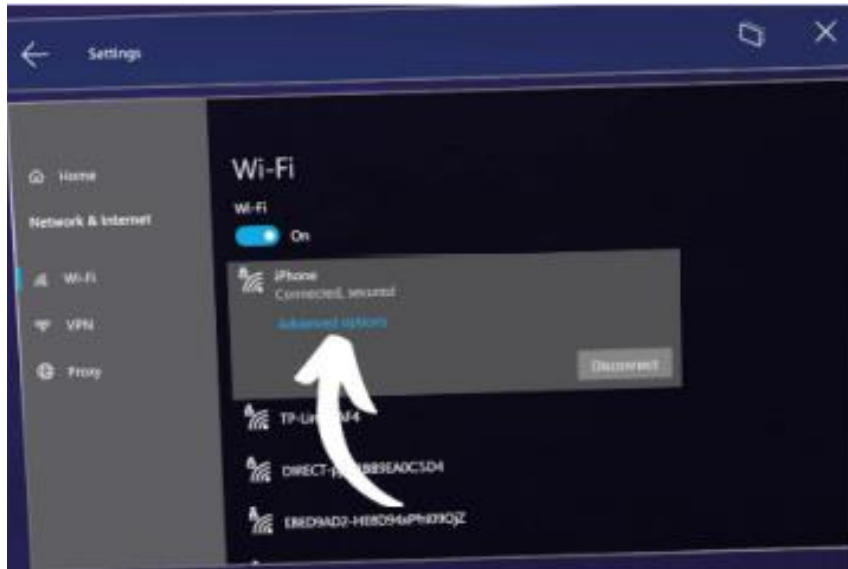
- Go to the Windows Device Portal via your IP address:
- Connect your computer to the same Wi-Fi network as your PC.
- Retrieve the V4 IP address of the HoloLens using the voice command "What is my IP? The IP address will be displayed in your HoloLens view

OR

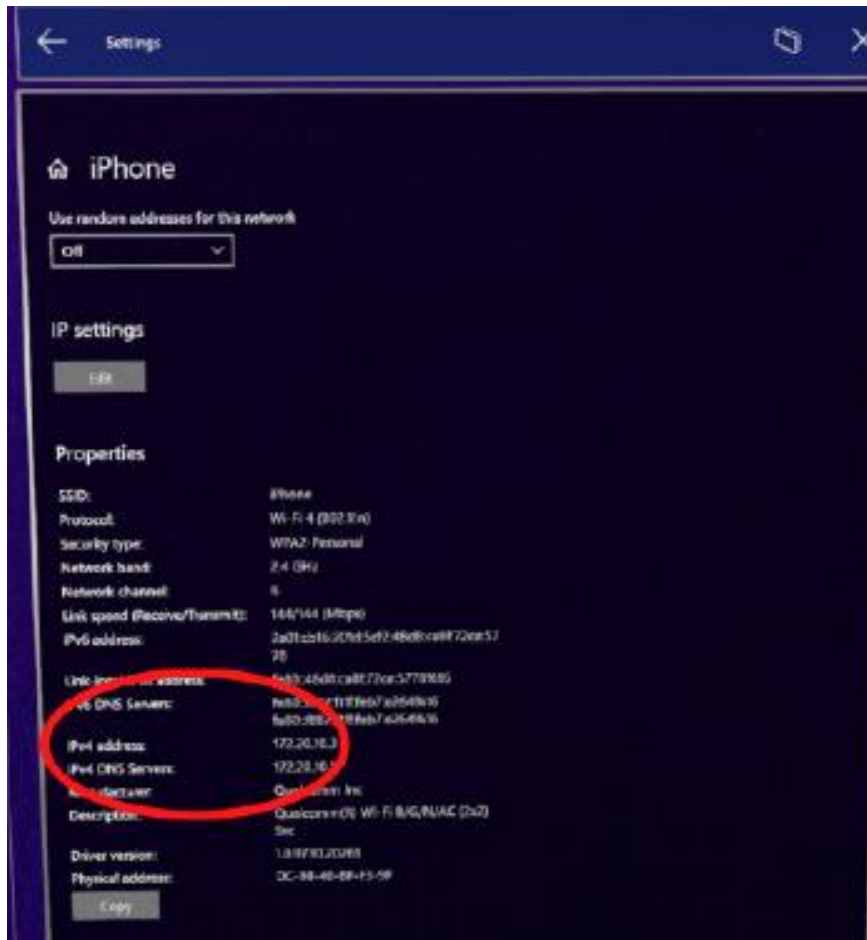
- Go to the headset settings :
- Settings/Network & Internet/Wi-Fi



- Select the Wifi network to which the PC and HoloLens are connected




- Click on Advanced Options and note the V4 IP address that appears at the bottom of the page (it is necessary to scroll to see it)



- Enter the V4 IP address in a web browser (Chrome, Mozilla... We recommend you to use Google Chrome or Mozilla Firefox to use the Windows portal. Otherwise, you will need to install a certificate in the web browser settings. Also, a shared connection with your phone is recommended if you are using a secure corporate Wi-Fi.)

Erreur liée à la confidentialité x +

← → ↻ Non sécurisé | https://172.20.10.3



Votre connexion n'est pas privée

Des individus malveillants tentent peut-être de subtiliser vos informations sur le site **172.20.10.3** (mots de passe, messages ou numéros de carte de crédit).
[En savoir plus](#)

NET::ERR_CERT_AUTHORITY_INVALID

💡 Pour bénéficier du niveau de sécurité le plus élevé de Chrome, activez la [protection renforcée](#).

Paramètres avancés

- Skip the security alerts, click on "Advanced settings" and then click on "Continue to dangerous site".



Votre connexion n'est pas privée

Des individus malveillants tentent peut-être de subtiliser vos informations personnelles sur le site **172.20.10.3** (mots de passe, messages ou numéros de carte de crédit, par exemple).
[En savoir plus](#)

NET::ERR_CERT_AUTHORITY_INVALID

💡 Pour bénéficier du niveau de sécurité le plus élevé de Chrome, [activez la protection renforcée](#)

Masquer les paramètres avancés

Revenir en lieu sûr

Impossible de vérifier sur le serveur qu'il s'agit bien du domaine **172.20.10.3**, car son certificat de sécurité n'est pas considéré comme fiable par le système d'exploitation de votre ordinateur. Cela peut être dû à une mauvaise configuration ou bien à l'interception de votre connexion par un pirate informatique.

[Continuer vers le site 172.20.10.3 \(dangereux\)](#)

- Enter the login and password that were defined during your first connection.

Se connecter pour accéder à ce site

Autorisation requise par https://172.20.10.3

Nom d'utilisateur

NEXT-BIM3

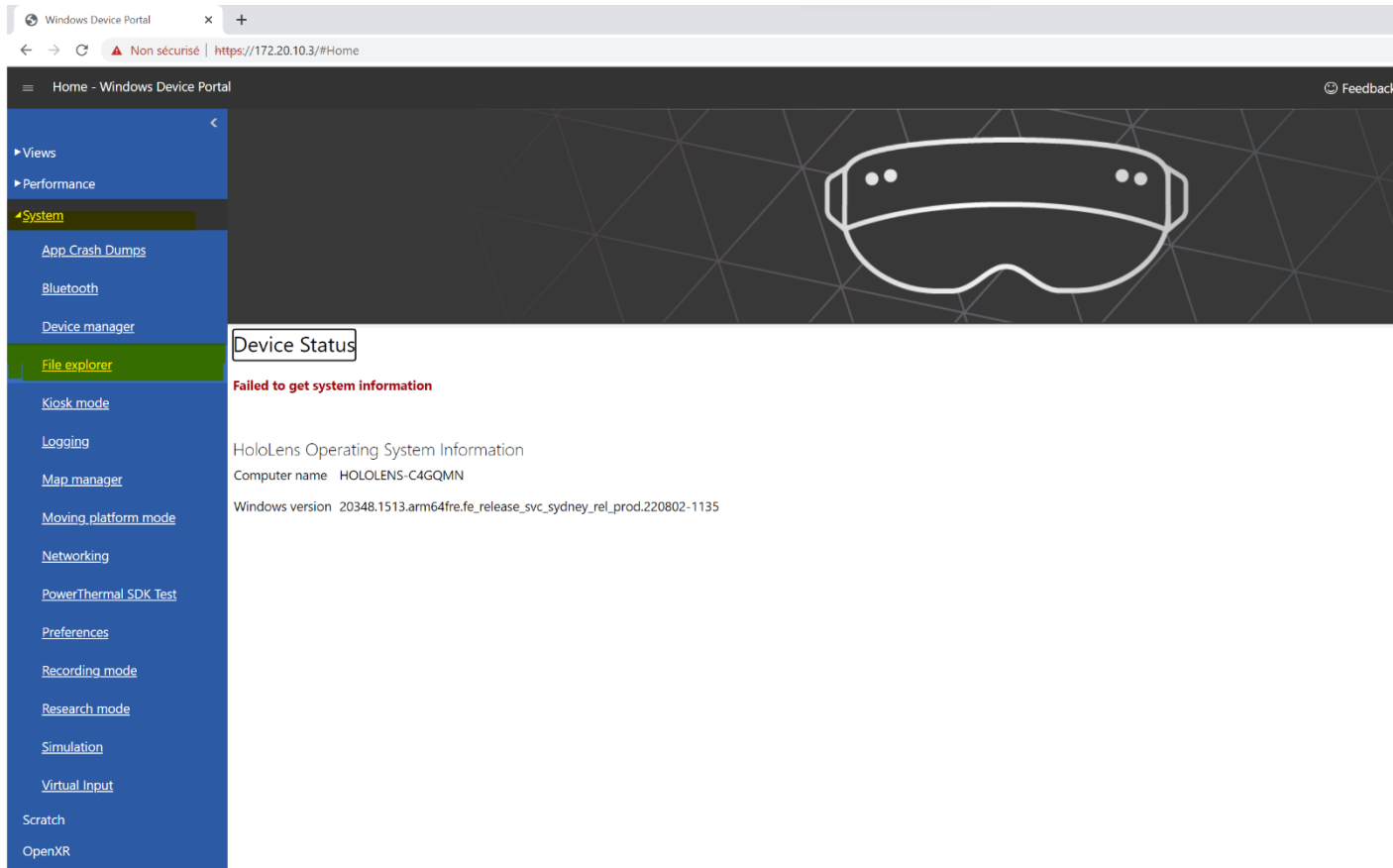
Mot de passe

.....

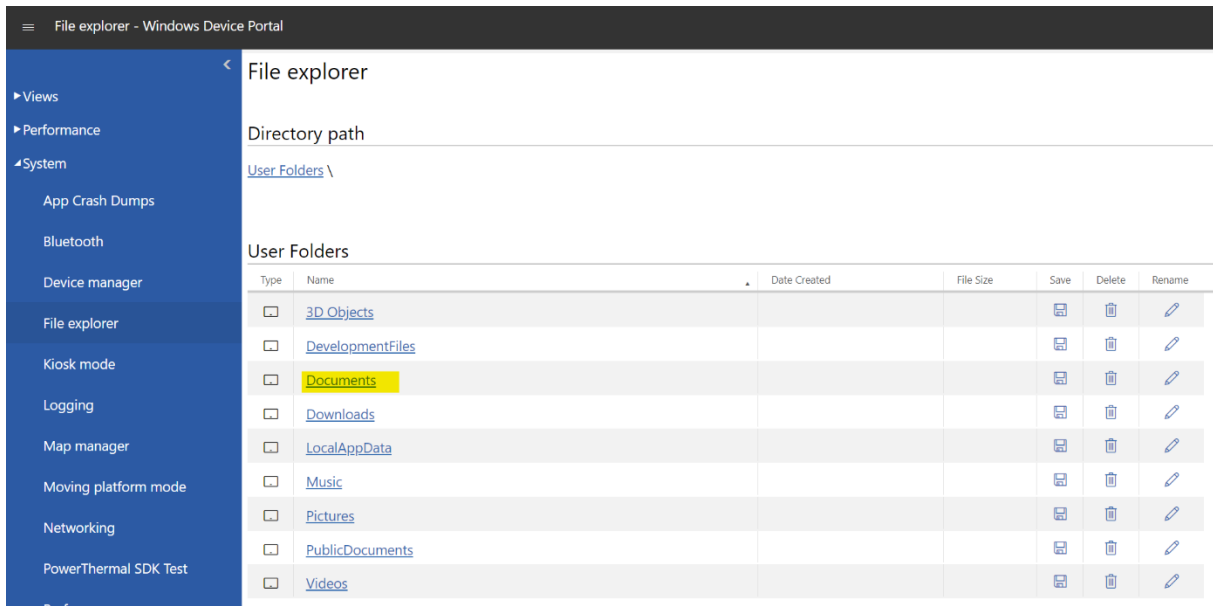
Se connecter

Annuler

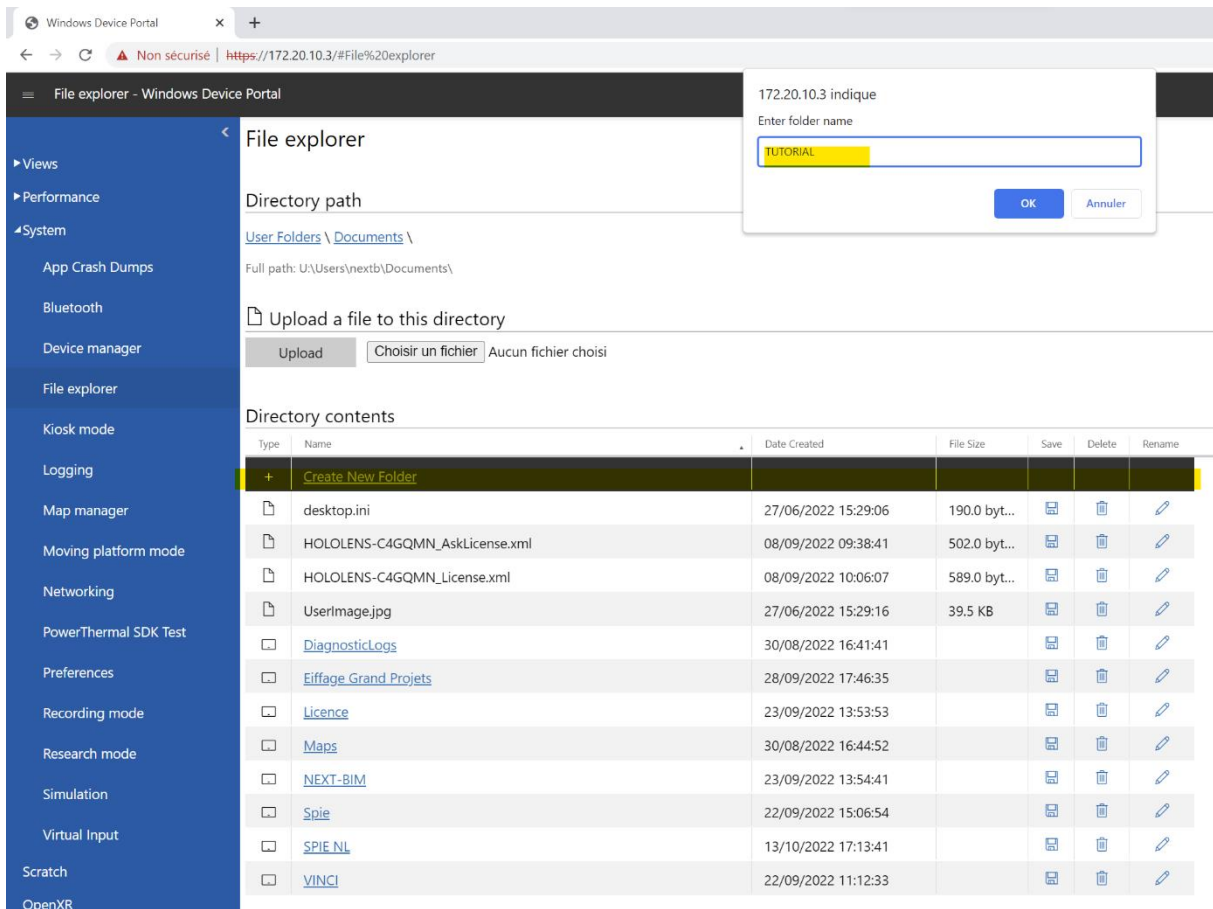
- Go to System > File Explorer



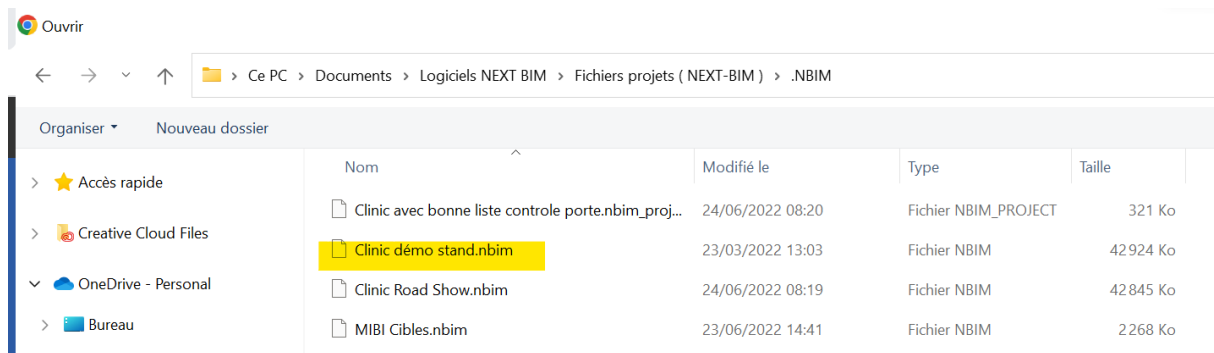
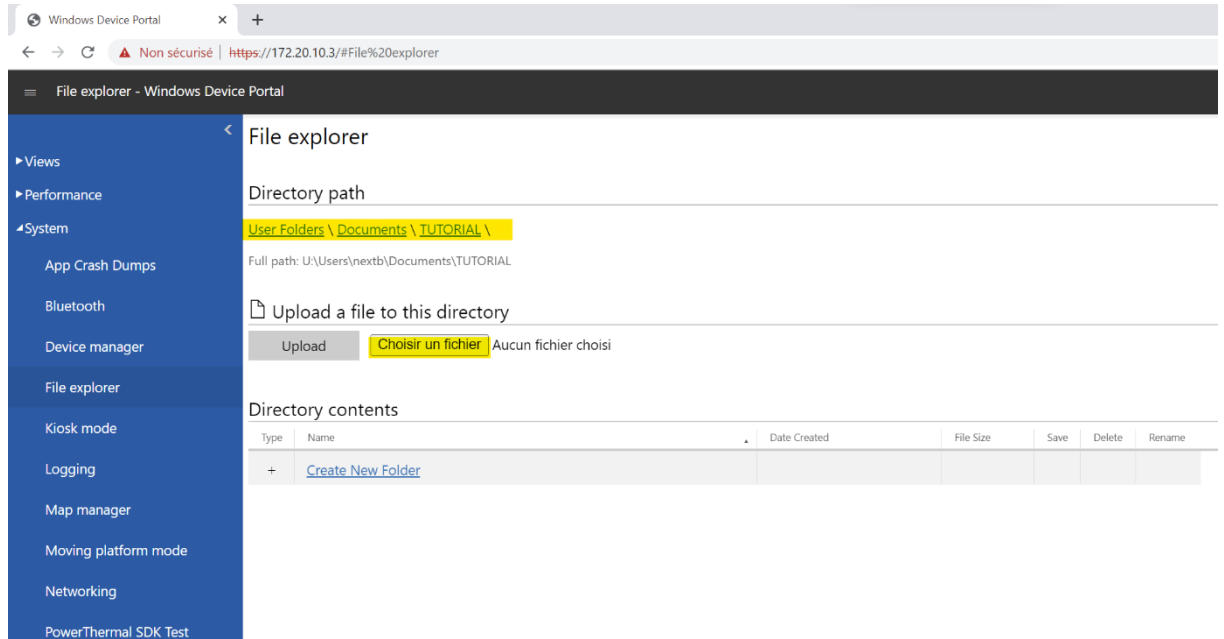
- Go to « Documents »



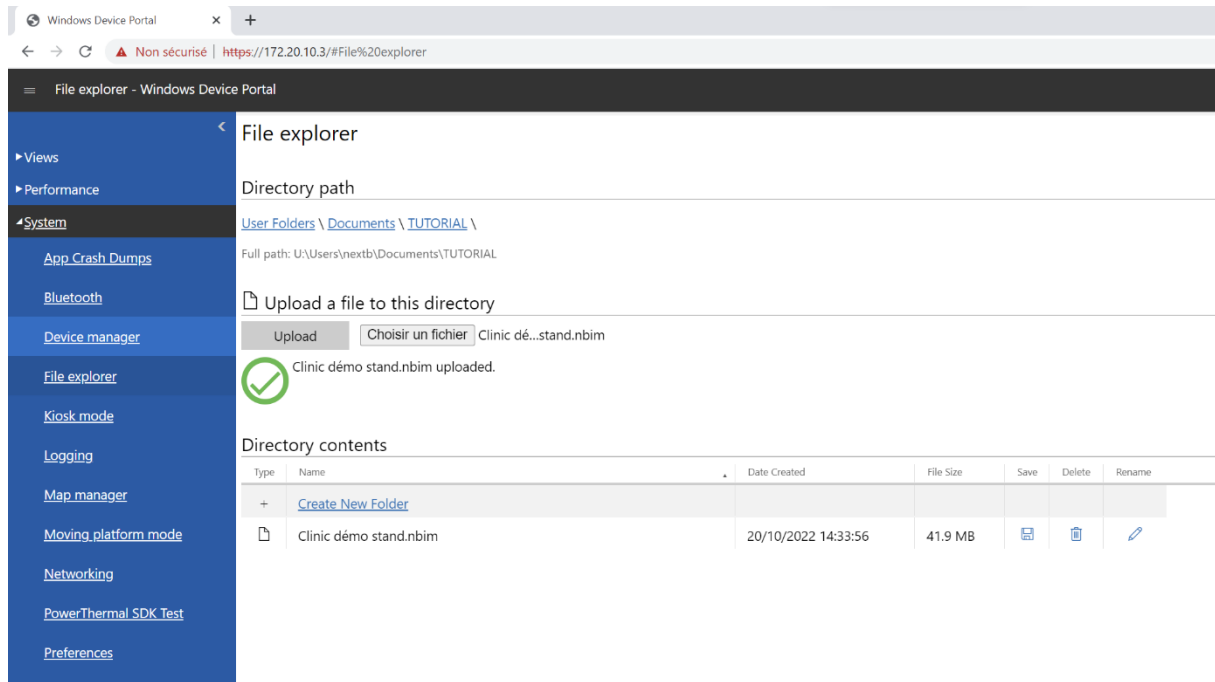
- Create a new folder [" Create New Folder ", Rename your folder and click on " OK " .



- Go to your new folder, click on "Choose a file" to import your .nbim file



- Click on "Upload" to finalise the import of the file. Your .nbim file is imported.



3) Have a router

(example : https://www.amazon.fr/TP-Link-Routeur-Mobile-LTE-Advanced-Bi-Bande/dp/B01EK8CVHW/ref=asc_df_B01EK8CVHW/?tag=googshopfr-21&linkCode=df0&hvadid=194932904069&hvpos=&hvnetw=g&hvrnd=14112016078209354650&hvpone=&hvptwo=&hvgmt=&hvdev=c&hvdvcmdl=&hvlocint=&hvl ocphy=9055358&hvtargid=pla-348290257802&th=1) or a phone.

4) Turn on the router or the mobile hotspot on your phone.

5) Connect the HoloLens on the local network (phone or router). All HoloLens must be connected to the same local network.

- Perform the **Start** gesture

1



2

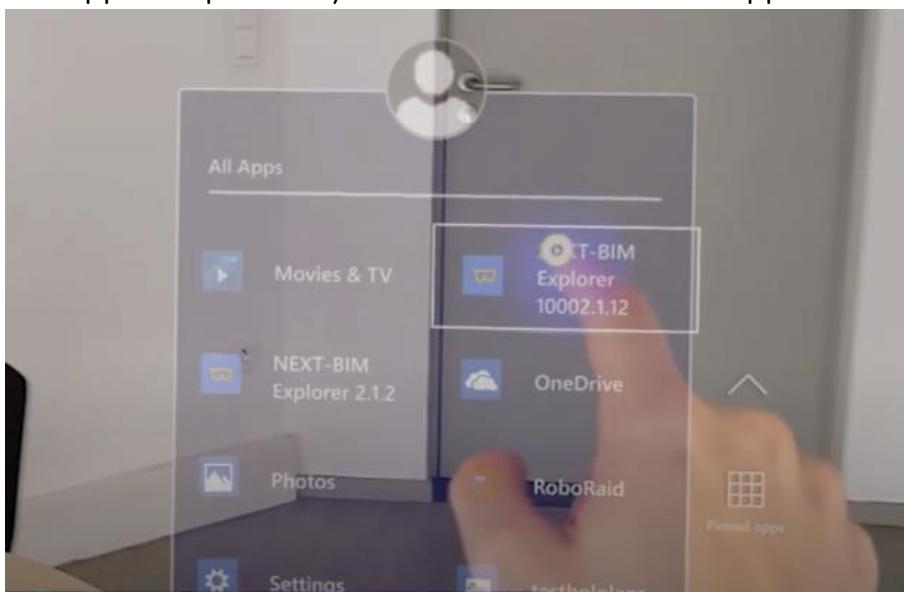


and select **Settings**. The Settings app will be auto-placed in front of you.

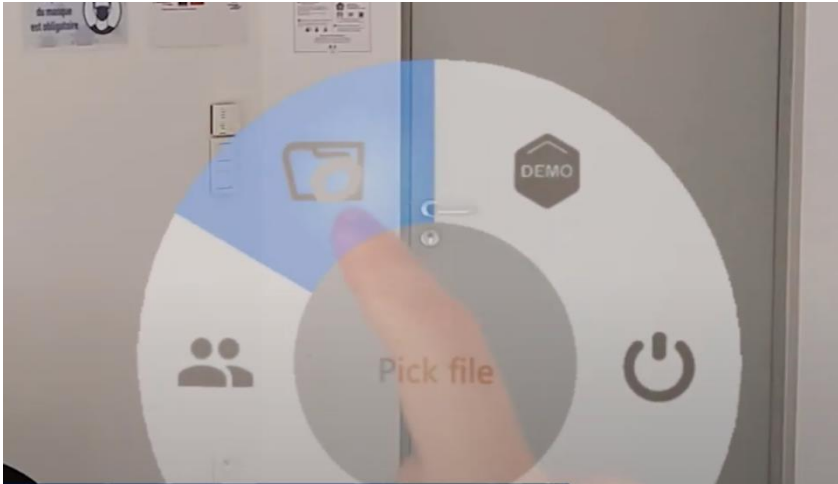
- Select **Network & Internet > Wi-Fi**. Make sure Wi-Fi is turned on. If you don't see your network, scroll down the list.
- Select a network, then select **Connect**.
- If you are prompted for a network password, type it and select **Next**.

6) Launch a first session of NEXT-BIM Explorer on a HoloLens (opening a nbim file)

- Open the NEXT-BIM Explorer application by clicking on it with your finger - The app will open and you will see a circular menu appear.



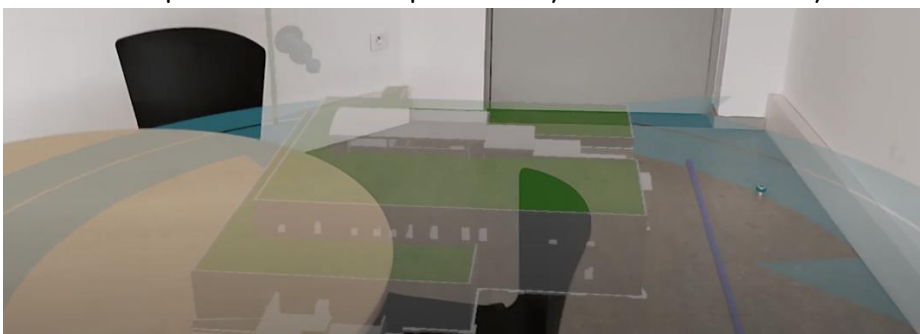
- Once the circular menu has appeared, click on the file icon to open a file



- Choose and click on the file you wish to open.

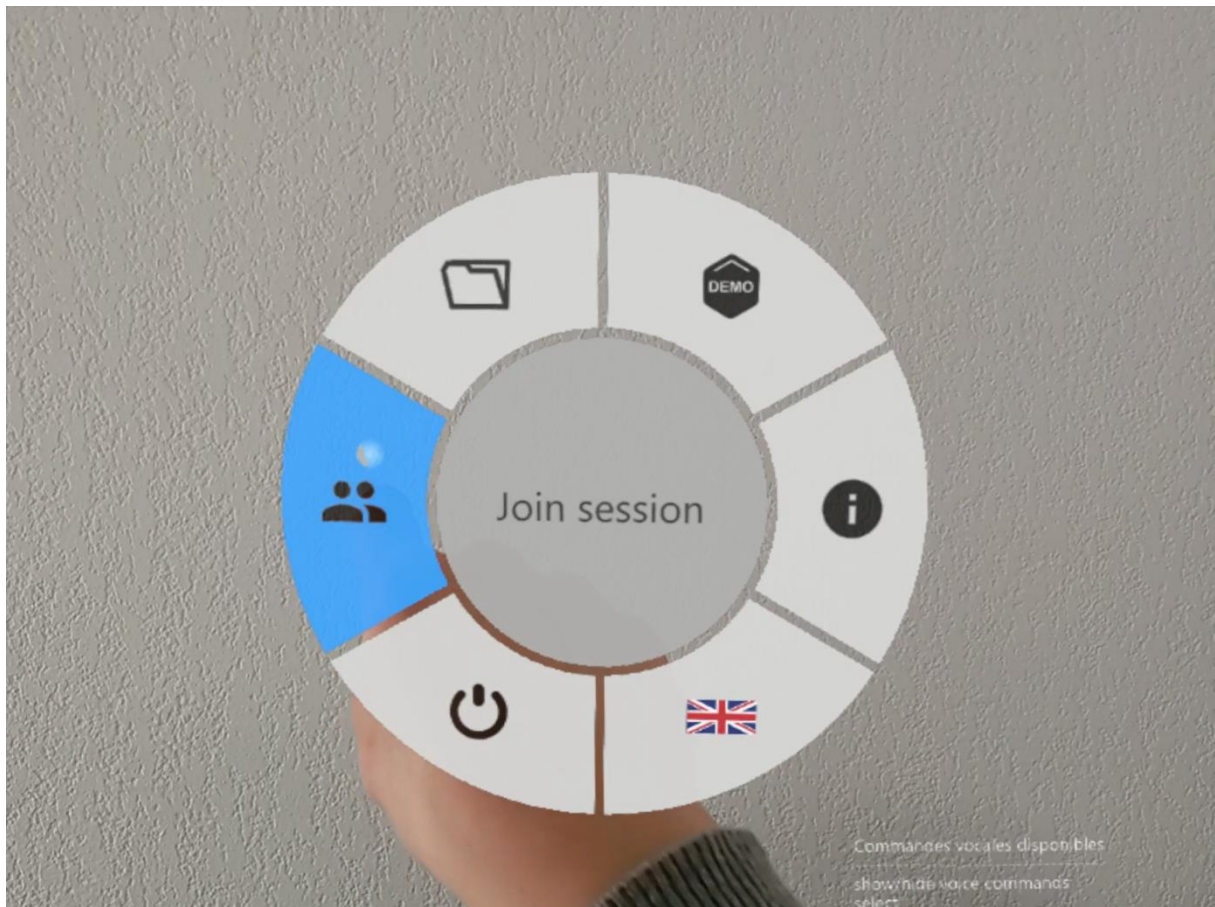


- The tabletop model should open once you have selected your file.



7) Launch NEXT-BIM Explorer in the second HoloLens and click on

"Join a session" in the first menu.



8) The second HoloLens will take a few moments to synchronize with the first session.

Be careful, you should not move too far away from each other. As well as away from the router.